

Test Report

No. SH8120432/CHEM

Date: Aug. 20, 2008

Page 1 of 5

SHENZHEN ARCHWAY ELECTRIC CO., LTD
GONGXIAOSHE INDUSTRING ZONE, WEST JIANSHE ROAD, GONGMING TOWN, BAO'AN DISTRICT,
SHENZHEN

The following sample(s) was/were submitted and identified by/on behalf of the client as:

Sample Name : HEAT-SHRINKABLE TUBING
SGS Ref No. : SZ11239458

Sample Receiving Date : Mar.24, 2008
Testing Period : Mar.24 – 28, 2008

Test Requested : (1) In accordance with the RoHS Directive 2002/95/EC, and its amendment directives.
(2) To determine the TBBP-A Content in the submitted sample.
(3) To determine the Halogen- Fluorine, Chlorine, Bromine, Iodine Content in the submitted sample.

Test Method : (1) With reference to IEC 62321/2nd CDV (111/95/CDV)
Procedures for the Determination of Levels of Regulated Substances in
Electrotechnical Products
(1-1)Determination of Cadmium by ICP.
(1-2)Determination of Lead by ICP.
(1-3)Determination of Mercury by ICP.
(1-4)Determination of Hexavalent Chromium by Colorimetric Method.
(1-5)Determination of PBBs and PBDEs by GC/MS.
(2) With reference to EPA 3550C: 2000. Analysis was performed by Gas
Chromatograph / Mass Spectrometer (GC/MS).
(3) With reference to EN 14582: 2007.
(3-1)Determination of Fluorine by Ion Chromatograph (IC) method.
(3-2)Determination of Chlorine by Ion Chromatograph (IC) method.
(3-3)Determination of Bromine by Ion Chromatograph (IC) method.
(3-4)Determination of Iodine by Ion Chromatograph (IC) method.

Test Results : Please refer to next pages

Conclusion : (1) Based on the performed tests on submitted samples, the results comply with the
RoHS Directive 2002/95/EC and its subsequent amendments.

Signed for and on behalf of
SGS-CSTC Chemical Laboratory



Ella Zhang
Section Manager

Signed for and on behalf of
SGS-CSTC Chemical Laboratory



Sandy Hao
Lab Manager

This document is issued by the Company under its General Conditions of Service printed overleaf or available on request and accessible at http://www.sgs.com/terms_and_conditions.htm. Attention is drawn to the limitation of liability, indemnification and jurisdiction issues defined therein. Any holder of this document is advised that information contained hereon reflects the Company's findings at the time of its intervention only and within the limits of Client's instructions, if any. The Company's sole responsibility is to its Client and this document does not exonerate parties to a transaction from exercising all their rights and obligations under the transaction documents. Any unauthorized alteration, forgery or falsification of the content or appearance of this document is unlawful and offenders may be prosecuted to the fullest extent of the law.
Unless otherwise stated the results shown in this test report refer only to the sample(s) tested. This document cannot be reproduced except in full, without prior approval of the Company.

Test Report

No. SH8120432/CHEM

Date: Aug. 20, 2008

Page 2 of 5

Test results by chemical method (Unit: mg/kg)

(1) Cadmium, Lead, Mercury, Hexavalent Chromium, PBBs (Polybrominated biphenyls) PBDEs (PBDEs) (Polybrominated biphenyl ethers) Content

Test Item(s):	Method (refer to)	1	MDL	RoHS Limit
Cadmium(Cd)	(1-1)	ND	2	100
Lead (Pb)	(1-2)	ND	2	1000
Mercury (Hg)	(1-3)	ND	2	1000
Hexavalent Chromium (CrVI) by alkaline extraction	(1-4)	ND	2	1000
Sum of PBBs	(1-5)	ND	-	1000
Monobromobiphenyl		ND	5	-
Dibromobiphenyl		ND	5	-
Tribromobiphenyl		ND	5	-
Tetrabromobiphenyl		ND	5	-
Pentabromobiphenyl		ND	5	-
Hexabromobiphenyl		ND	5	-
Heptabromobiphenyl		ND	5	-
Octabromobiphenyl		ND	5	-
Nonabromobiphenyl		ND	5	-
Decabromobiphenyl		ND	5	-
Sum of PBDEs (Note 4)		ND	-	1000
Monobromodiphenyl ether		ND	5	-
Dibromodiphenyl ether		ND	5	-
Tribromodiphenyl ether		ND	5	-
Tetrabromodiphenyl ether		ND	5	-
Pentabromodiphenyl ether		ND	5	-
Hexabromodiphenyl ether		ND	5	-
Heptabromodiphenyl ether		ND	5	-
Octabromodiphenyl ether		ND	5	-
Nonabromodiphenyl ether	ND	5	-	
Decabromodiphenyl ether	ND	5	-	
Sum of PBDEs (Mono to Deca)	ND	-	-	

(2) TBBP-A Content

Test Item(s):	Method (refer to)	1	MDL
TBBP-A	(2)	ND	10

This document is issued by the Company under its General Conditions of Service printed overleaf or available on request and accessible at http://www.sgs.com/terms_and_conditions.htm. Attention is drawn to the limitation of liability, indemnification and jurisdiction issues defined therein. Any holder of this document is advised that information contained hereon reflects the Company's findings at the time of its intervention only and within the limits of Client's instructions, if any. The Company's sole responsibility is to its Client and this document does not exonerate parties to a transaction from exercising all their rights and obligations under the transaction documents. Any unauthorized alteration, forgery or falsification of the content or appearance of this document is unlawful and offenders may be prosecuted to the fullest extent of the law. Unless otherwise stated the results shown in this test report refer only to the sample(s) tested. This document cannot be reproduced except in full, without prior approval of the Company.

(3) Halogen- Fluorine, Chlorine, Bromine, Iodine Content

<u>Test Item(s):</u>	<u>Method (refer to)</u>	<u>1</u>	<u>MDL</u>
Fluorine(F)	(3-1)	151	50
Chlorine(Cl)	(3-2)	146	50
Bromine(Br)	(3-3)	ND	50
Iodine(I)	(3-4)	ND	50

Test Part Description:

1. Black plastic tube with white printing

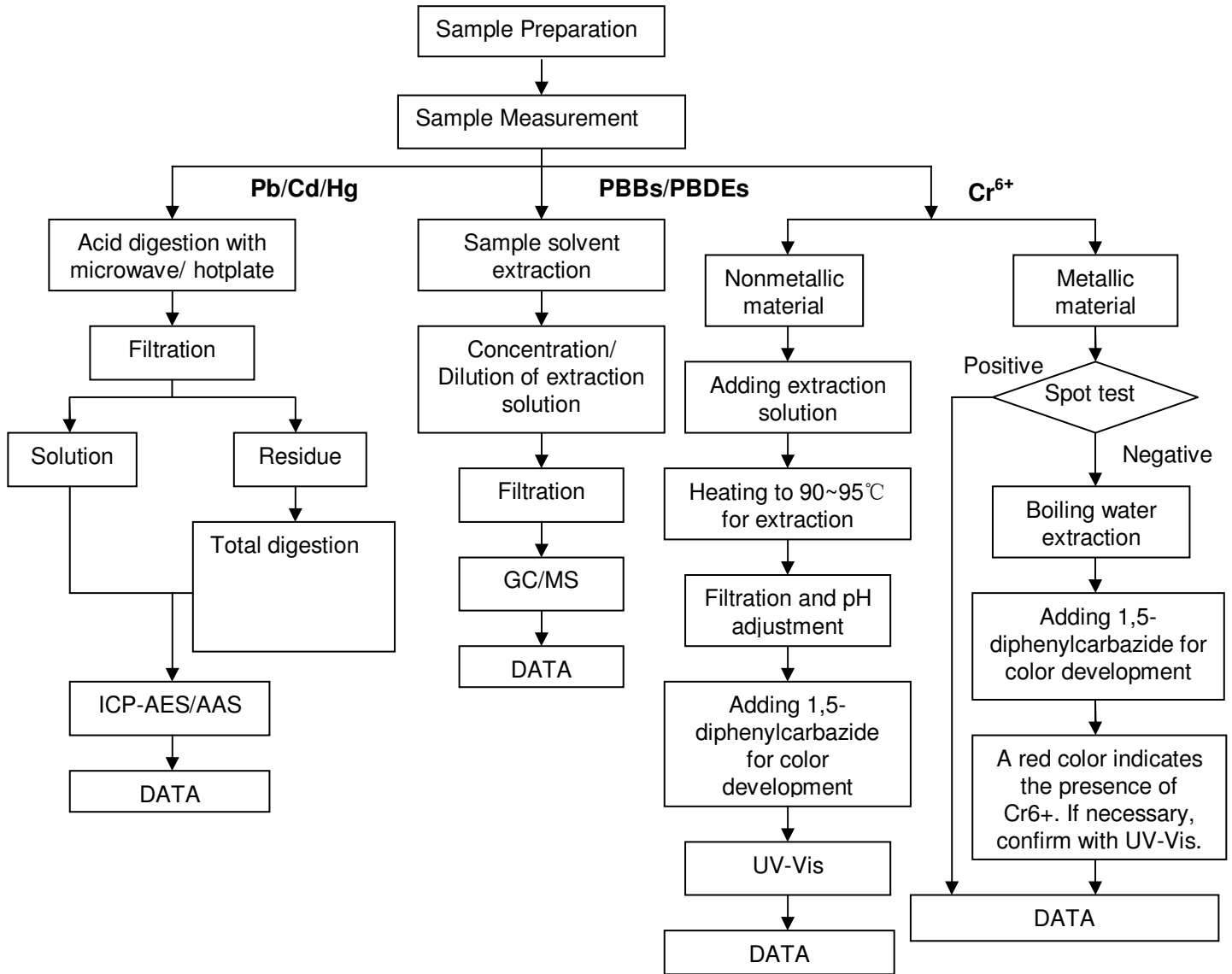
Note:

- (1) mg/kg = ppm
- (2) ND = Not Detected
- (3) MDL = Method Detection Limit
- (4) Sum of Mono to NonaBDE & according to 2005/717/EC DecaBDE is exempt.
- (5) “-” = Not Regulated
- (6) The maximum permissible limit is quoted from the document 2005/618/EC amending RoHS directive 2002/95/EC
- (7) The test results are taken from report SH8037827/CHEM, Date: 2008/03/28

This document is issued by the Company under its General Conditions of Service printed overleaf or available on request and accessible at http://www.sgs.com/terms_and_conditions.htm. Attention is drawn to the limitation of liability, indemnification and jurisdiction issues defined therein. Any holder of this document is advised that information contained hereon reflects the Company's findings at the time of its intervention only and within the limits of Client's instructions, if any. The Company's sole responsibility is to its Client and this document does not exonerate parties to a transaction from exercising all their rights and obligations under the transaction documents. Any unauthorized alteration, forgery or falsification of the content or appearance of this document is unlawful and offenders may be prosecuted to the fullest extent of the law. Unless otherwise stated the results shown in this test report refer only to the sample(s) tested. This document cannot be reproduced except in full, without prior approval of the Company.

ATTACHMENTS

- 1) Name of the person who made measurement: Cathy Cai/George Xu/Diane Wang
- 2) Name of the person in charge of measurement: Terry Wang/Tracy Yue
- 3) These samples were dissolved totally by pre-conditioning method according to below flow chart. (Cr6+ and PBBs/PBDEs test method excluded)



This document is issued by the Company under its General Conditions of Service printed overleaf or available on request and accessible at http://www.sgs.com/terms_and_conditions.htm. Attention is drawn to the limitation of liability, indemnification and jurisdiction issues defined therein. Any holder of this document is advised that information contained hereon reflects the Company's findings at the time of its intervention only and within the limits of Client's instructions, if any. The Company's sole responsibility is to its Client and this document does not exonerate parties to a transaction from exercising all their rights and obligations under the transaction documents. Any unauthorized alteration, forgery or falsification of the content or appearance of this document is unlawful and offenders may be prosecuted to the fullest extent of the law. Unless otherwise stated the results shown in this test report refer only to the sample(s) tested. This document cannot be reproduced except in full, without prior approval of the Company.



Sample photo:



SGS authenticate the photo on original report only

*** End of Report ***

This document is issued by the Company under its General Conditions of Service printed overleaf or available on request and accessible at http://www.sgs.com/terms_and_conditions.htm. Attention is drawn to the limitation of liability, indemnification and jurisdiction issues defined therein. Any holder of this document is advised that information contained hereon reflects the Company's findings at the time of its intervention only and within the limits of Client's instructions, if any. The Company's sole responsibility is to its Client and this document does not exonerate parties to a transaction from exercising all their rights and obligations under the transaction documents. Any unauthorized alteration, forgery or falsification of the content or appearance of this document is unlawful and offenders may be prosecuted to the fullest extent of the law. Unless otherwise stated the results shown in this test report refer only to the sample(s) tested. This document cannot be reproduced except in full, without prior approval of the Company.